

*The latest findings from university research
now also for non-students and without long-term commitment!*

EUROPA INSTITUT SEKTION
WIRTSCHAFTSWISSENSCHAFT
EUROPEAN INSTITUTE FOR
ADVANCED BEHAVIOURAL MANAGEMENT



UNIVERSITÄT
DES
SAARLANDES

Anyone who runs a successful business must be able to identify the latest trends and interpret the data they generate. Learn from experienced professors at the university level in our continuing education course

Corporate Sustainability and Social Responsibility

Ideal for:

- Practitioners who want to identify opportunities and weaknesses
- Companies that want to promote innovation or are looking for environmentally friendly technologies, products and services
- All those who want to further their education in the field of sustainability

Benefit from the latest insights from science and practice taught by lecturers who are leading the way:



Univ-Prof. Dr. Christian Berg
TU Clausthal

Contact us by phone on 0681 302-2553 or register directly at <https://www.eiabm.de/en/certificates/> for our course "Corporate Sustainability and Social Responsibility" from 17 to 20 January 2024 (9.00am-6.00pm each day) at the European Institute for Advanced Behavioural Management (EIABM) at Saarland University.

Please find more information on the course and lecturers on the following pages.

„Corporate Sustainability and Social Responsibility“ at Europa-Institut, Sektion Wirtschaftswissenschaft der Universität des Saarlandes

When?

The workshop in English will take place from **17-20 January 2024** daily from 9.00am-6.00pm on the Saarbrücken campus.

How and Where?

You can register directly with us until 12.01.2024, we are happy to answer your calls by phone, virtually or in presence on campus, the course will also take place on the premises of the EIABM on the Saarbrücken campus:

Your Contact Person:

Julia Senni, M.A.

Programme Manager

Phone: +49 (0) 681 / 302 – 2553

Email: info@mba-europe.de

Saarland University

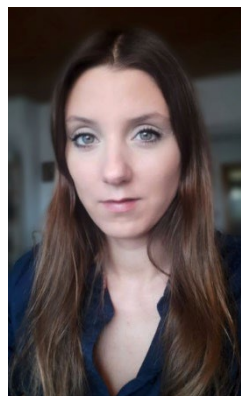
EIABM / Europa-Institut

Campus, Building A5.4

1st floor, room 1.07

66123 Saarbrücken

<https://www.eiabm.de/en/certificates/>



Why?

Take advantage of the opportunity to continue your education at university level with little time and application effort and receive first-class additional education in the field of modern management. In addition to valuable knowledge relevant to practice, you will receive an academic, internationally recognised certificate from Saarland University which will help you climb the next rung on your personal career ladder.

Cost

The participation fee per course is 849€.

The course meets the requirements for claiming educational leave !

„Corporate Sustainability and Social Responsibility“ at Europa-Institut, Sektion Wirtschaftswissenschaft der Universität des Saarlandes

Qualification Objectives: Increasing awareness of the complexity of issues related to sustainability and their interdependence; Understanding crucial challenges for sustainability; why businesses need to respond to these issues, what market trends are, what measures businesses take in order to address these challenges; perspectives on the different actors relevant for Corporate Sustainability.

Content: Overview of the complex challenges of a sustainable development; concepts of sustainability, global change and planetary boundaries, spotlight three types of challenges: (re-) sources, declines, and development; causes for non-sustainability, the political framework needed, the implications for business: market trends in sustainability, pushing factors, realizations of corporate sustainability, the role of investors.

Lecturer: Univ.-Prof. Dr.-Ing. Dr. Christian Berg, TU Clausthal/ Germany

Prof. Dr.-Ing. Dr. Christian Berg is an internationally recognised sustainability expert and leading scientist. His subject areas include sustainability and social responsibility. Prof. Berg focuses on Sustainable Development, Corporate Sustainability, Sustainability and IT and Networking processes.

Your Contact Person:

Julia Senni, M.A.

Programme Manager

Phone: +49 (0) 681 / 302 – 2553

Email: info@mba-europe.de

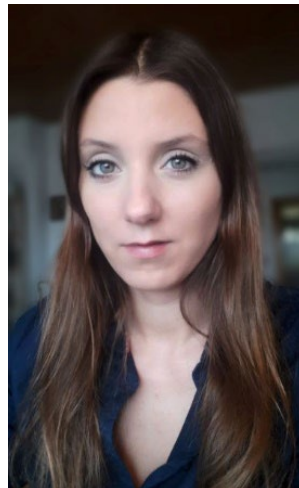
Saarland University

EIABM / Europa-Institut

Campus, Building A5.4

1st floor, room 1.07

66123 Saarbrücken



<https://www.eiabm.de/en/certificates/>