

*The latest findings from university research  
now also for non-students and without long-term commitment!*

EUROPA INSTITUT SEKTION  
WIRTSCHAFTSWISSENSCHAFT  
EUROPEAN INSTITUTE FOR  
ADVANCED BEHAVIOURAL MANAGEMENT



UNIVERSITÄT  
DES  
SAARLANDES

A successful business requires knowledge of economics and finance to make sound business decisions, efficiently manage financial resources, identify growth opportunities, and ensure long-term financial stability. Learn from experienced professors at the university level in our continuing education course

## Economics and Finance

Ideal for:

- Practitioners who want to analyze the economic impact of decisions and take financial aspects into account in their professional activities
- Companies that want to develop business strategies and make successful investment decisions
- All those who want to develop professionally in the field of Economics and Finance

Benefit from the latest insights from science and practice taught by lecturers who are leading the way:



**Prof. Dr.  
Jan Wenzelburger**  
Technical University of Kaiserslautern

Contact us by phone on 0681 302-2553 or register directly at <https://www.eiabm.de/en/certificates/> for our course "Economics and Finance" from 6 to 9 December 2023 (9.00am-6.00pm each day) at the European Institute for Advanced Behavioural Management (EIABM) at Saarland University.

Please find more information on the course and lecturers on the following pages.

## „Economics and Finance“ at Europa-Institut, Sektion Wirtschaftswissenschaft der Universität des Saarlandes

### When?

The workshop in English will take place from **6-9 December 2023** daily from 9.00am-6.00pm on the Saarbrücken campus.

### How and Where?

You can register directly with us until 1.12.2023, we are happy to answer your calls by phone, virtually or in presence on campus, the course will also take place on the premises of the EIABM on the Saarbrücken campus:

#### Your Contact Person:

**Julia Senni, M.A.**

Programme Manager

Phone: +49 (0) 681 / 302 – 2553

Email: [info@mba-europe.de](mailto:info@mba-europe.de)

Saarland University

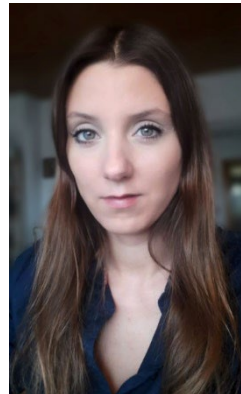
EIABM / Europa-Institut

Campus, Building A5.4

1st floor, room 1.07

66123 Saarbrücken

<https://www.eiabm.de/en/certificates/>



### Why?

Take advantage of the opportunity to continue your education at university level with little time and application effort and receive first-class additional education in the field of modern management. In addition to valuable knowledge relevant to practice, you will receive an academic, internationally recognised certificate from Saarland University which will help you climb the next rung on your personal career ladder.

### Cost

The participation fee per course is 849€.

The course meets the requirements for claiming educational leave !

## „Economics and Finance“ at Europa-Institut, Sektion Wirtschaftswissenschaft der Universität des Saarlandes

**Qualification Objectives:** At the start of the twenty-first century, international aspects of economics and finance remain as important and controversial as ever. The objective of this course is to provide an up-to-date and understandable analytical framework for illuminating current events and bringing the excitement of international and, especially, European economics and finance into the classroom.

**Content:** In analyzing both the real and the monetary sides of the subject, the aim of this module is to build up a simple unified framework for communicating the grand traditional insights as well as the newest findings and approaches. In order to help students grasp and retain the underlying logic of international economics and finance, the theoretical development is motivated at each stage by pertinent data or policy questions. Throughout the module, there is a special focus on European aspects and causes and consequences of the euro area debt and banking crisis.

### Lecturer:

**Prof. Dr. Wenzelburger** is Dean of the Faculty of Economics at the Technical University of Kaiserslautern and heads the Chair of Macroeconomics there. His research focuses include the Financial Economics, Overlapping generation models, Theory of learning, Banking and Financial Markets.

### Your Contact Person:

**Julia Senni, M.A.**

Programme Manager

Phone: +49 (0) 681 / 302 – 2553

Email: [info@mba-europe.de](mailto:info@mba-europe.de)

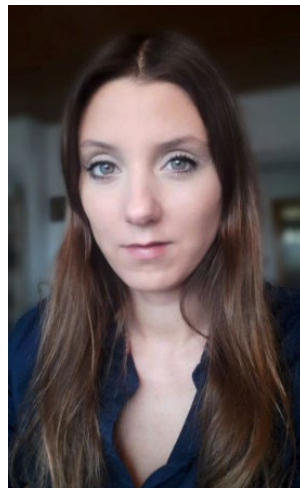
Saarland University

EIABM / Europa-Institut

Campus, Building A5.4

1st floor, room 1.07

66123 Saarbrücken



<https://www.eiabm.de/en/certificates/>