

Department of Economics at Saarland University

FUNDAMENTALS OF MANAGEMENT AS CERTIFIED INDIVIDUAL COURSES

The latest findings from
university research
without a degree
and **without** long-term
commitment!

CORPORATE SUSTAINABILITY AND SOCIAL RESPONSIBILITY

As a manager, how do you
navigate a company safely
through the jungle of
sustainability, fair trade, climate
protection and resource scarcity
while protecting human rights,
promoting multicultural
integration and maintaining
profitability? Learn from the
leading expert at university level
in our continuing education
course.

Ideal for:

- Practitioners who want to identify opportunities and weaknesses
- Companies that want to promote innovation or are looking for environmentally friendly technologies, products and services
- All those who want to further their education in the field of sustainability

Benefit from the latest insights from science and
practice taught by lecturers who are leading the way



Univ.-Prof. Dr.-Ing.
Dr. Christian Berg

„Corporate Sustainability and Social Responsibility“ at Europa-Institut, Department of Economics at Saarland University

When and where?

The certificate course in English takes place annually in the winter semester (expected in January) as a block course from Wednesday to Saturday all day in presence at our institute on the Saarbrücken campus: Building A5.4 Room 2.06.

How?

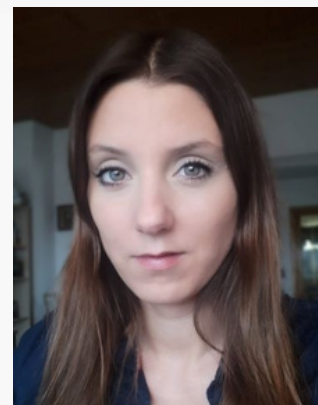
You can register directly with us up to one week before the start of the course and we will be happy to assist you by telephone, virtually or in person on campus.

Why?

Take advantage of the opportunity to continue your education at university level with little time and application effort and receive first-class additional education in the field of modern management. In addition to valuable knowledge relevant to practice, you will receive an academic, internationally recognised certificate from Saarland University which will help you climb the next rung on your personal career ladder.

Cost

The participation fee per course is 849€. The course meets the requirements for claiming educational leave!



Your contact person:

Julia Senni, M.A.

Programme Manager

Phone: +49 (0) 681 / 302 – 2553

Email: info@mba-europe.de

Saarland University

EIABM / Europa-Institut

Campus, Building A5.4

1st floor, room 1.07

66123 Saarbrücken

<https://www.eiabm.en/certificates/>

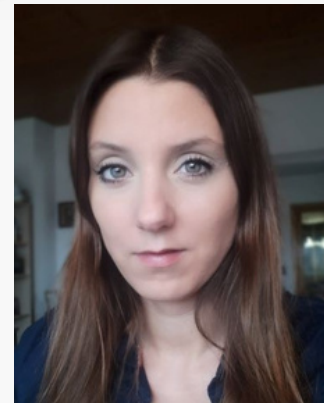
„Corporate Sustainability and Social Responsibility“ at Europa-Institut, Department of Economics at Saarland University

Qualification Objectives: Increasing awareness of the complexity of issues related to sustainability and their interdependence; Understanding crucial challenges for sustainability; why businesses need to respond to these issues, what market trends are, what measures businesses take in order to address these challenges; perspectives on the different actors relevant for Corporate Sustainability.

Content: Overview of the complex challenges of a sustainable development and the implications for the corporate world. Following a general introduction to the concepts of sustainability, global change and planetary boundaries, the lecture discusses how the role of businesses has changed in the last few decades. The focus on shareholder maximization is no longer sufficient, a broader set of stakeholder expectations have to be managed. The lecture will then explain the business case for sustainability. Finally, a few spotlights will be given on how corporate sustainability can be realized, e.g. by carbon footprinting, sustainability reporting, by implementing respective management systems or the shift towards circularity.

Lecturer: Univ.-Prof. Dr.-Ing. Dr. Christian Berg, TU Clausthal/ Germany Prof. Dr.-Ing. Dr. Christian Berg is an internationally recognised sustainability expert and leading scientist.

His subject areas include sustainability and social responsibility. Prof. Berg focuses on Sustainable Development, Corporate Sustainability, Sustainability and IT and Networking processes.



Your contact person:
Julia Senni, M.A.

Programme Manager

Phone: +49 (0) 681 / 302 – 2553

Email: info@mba-europe.de

Saarland University

EIABM / Europa-Institut

Campus, Building A5.4

1st floor, room 1.07

66123 Saarbrücken

<https://www.eiabm.en/certificates/>