

Department of Economics at Saarland University

FUNDAMENTALS OF MANAGEMENT AS CERTIFIED INDIVIDUAL COURSES

The latest findings from university research also available **without** a degree and **without** long-term commitment!

LEADERSHIP AND HUMAN RESOURCE MANAGEMENT

Anyone who wants to run a company successfully needs capable and motivated employees and managers. Learn from experienced professors at university level in our continuing education course Leadership and Human Resource Management !

Ideal for:

- Practitioners who want to recruit and retain capable employees
- Companies that want to develop or maintain a positive corporate culture
- All those who want to develop professionally in the field of leadership and human resource management

Benefit from the latest insights from science and practice taught by lecturers who are leading the way.



**Prof. em Dr. Torsten
Kühlmann**

„Leadership and Human Resource Management“ at Europa-Institut, Department of Economics at Saarland University

When and where?

The certificate course in English takes place annually in the winter semester (expected in February) as a block course from Wednesday to Saturday all day in presence at our institute on the Saarbrücken campus: Building A5.4 Room 2.06.

How?

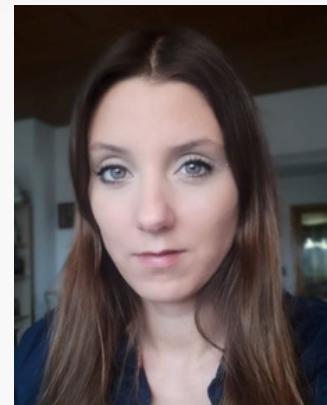
You can register directly with us up to one week before the start of the course and we will be happy to assist you by telephone, virtually or in person on campus.

Why?

Take advantage of the opportunity to continue your education at university level with little time and application effort and receive first-class additional education in the field of modern management. In addition to valuable knowledge relevant to practice, you will receive an academic, internationally recognised certificate from Saarland University which will help you climb the next rung on your personal career ladder.

Cost

The participation fee per course is 849€. The course meets the requirements for claiming educational leave!



Your contact person:

Julia Senni, M.A.

Programme Manager

Phone: +49 (0) 681 / 302 – 2553

Email: info@mba-europe.de

Saarland University

EIABM / Europa-Institut

Campus, Building A5.4

1st floor, room 1.07

66123 Saarbrücken

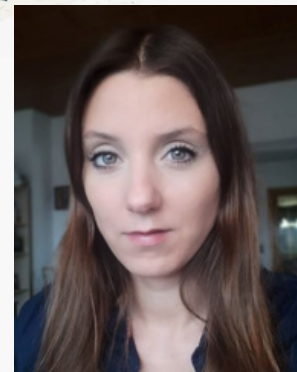
<https://www.eiabm.en/certificates/>

„Leadership and Human Resource Management“ at Europa-Institut, Economics Section of Saarland University

Qualification Objectives: This course will help students understand strategic dimensions of leadership and Human Resource Management in times of disruptive change. Students should be able to explain the foundations of professional HRM on a strategic level. They should be aware of how leadership as well as HRM function contribute to optimizing human capital and creating added value for organisations. They will get insight into recent research on leadership and HRM and behavior-related and measurement-related perspectives in HRM. They should be able to find solutions for highly recurrent challenges in leadership.

Content: This module looks at major theories of work motivation and leadership and analyzes how different cultural backgrounds of leaders and followers have an impact on leadership effectiveness. The students will acquire knowledge about both the general impact of culture on leadership and national cultures of specific regions of the world. Based on this, the module presents and discusses different strategies to handle a culturally diverse workforce. The methods used in this module include lecture, class discussion, case analysis, and experiential exercises. Students are expected to be active participants in the learning experience.

Lecturer: Prof. em. Dr. Torsten Kühlmann is President of the Bayreuth Research Institute for SMEs (BF/M). He was professor at the University of Bayreuth for 30 years and holder the Chair of Human Resource Management. His research interests included expatriate management, international human resource management, corruption between organisations, cross-border networks, migration and knowledge management. In addition, Prof. Dr. Torsten Kühlmann is Chairman of the Board of Institute of International Communication Bayreuth and member of the Executive Board of the Foundation of International Management in Bayreuth.



Your contact person:

Julia Senni, M.A.

Programme Manager

Phone: +49 (0) 681 / 302 – 2553

Email: info@mba-europe.de

Saarland University

EIABM / Europa-Institut

Campus, Building A5.4

1st floor, room 1.07

66123 Saarbrücken

<https://www.eiabm.eu/certificates/>